



Dear DODO ARMY recruit!

Thank you for downloading DODO@Home and helping us untangle and decode the mysteries of the past!

Using our unique software, you will be making history with us. Setting up DODO@Home on your device is simple and takes less than a minute to do. Once done, our software will run in the background, only when you're connected to a power-supply so there's no fear of it draining your battery (you can change these settings in the main DODO@Home platform as detailed below).

- ✓ **DODO@Home is SAFE to use and run.**
- ✓ Our software uses the respected and trusted BOINC platform, developed by **Berkeley University**.
- ✓ Your anti-virus software will automatically scan the software giving you added peace of mind.
- ✓ Our software does not scan or gather *any data from your device*.
- ✓ Devices running DODO@Home are provided by individuals across the world who want to contribute to solving underlying scientific problems associated with the de-extinction process.
- ✓ Once you have signed up and installed the client software on your computer or phone, our servers distribute tasks to run in the background *when your device is idle*. This processing does not inconvenience your normal computer usage.

Setting up DODO@Home

Step 1: Download BOINC

Choose your OS. <https://boinc.berkeley.edu/download.php>

- Windows (64-bit only); https://boinc.berkeley.edu/dl/boinc_8.0.2_windows_x86_64.exe
- Apple Mac (64-bit and Apple Silicon; MacOS 10.3+):
https://boinc.berkeley.edu/dl/boinc_8.0.2_macOSX_universal.zip
- Linux x64: https://boinc.berkeley.edu/linux_install.php (NOTE: this page allows you to select your specific version of Linux)

Step 2: Install BOINC

Follow the instructions to install the software.

Step 3: Setup and Connect to DODO@Home

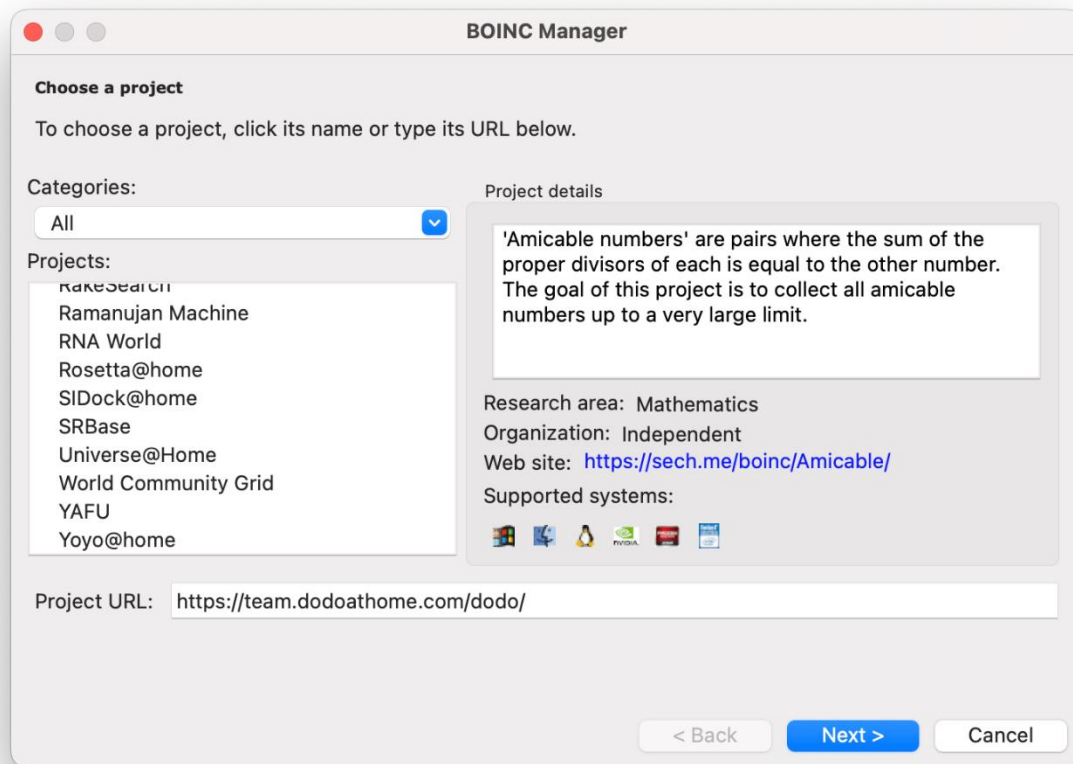
Once the software is installed, the BOINC Manager should start.

You're almost there! Just a few more simple steps and you'll be up and running.
(The following are steps for Mac users but Windows is more-or-less the same)

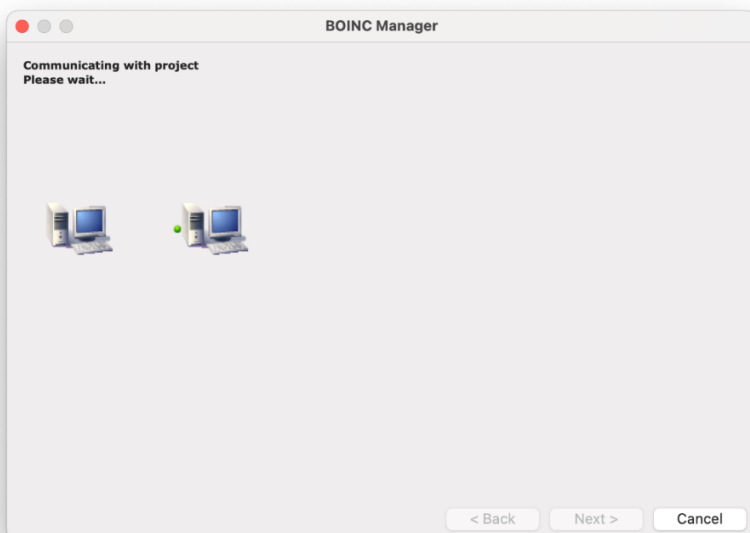
Step 4: Copy and Paste our Project

THIS BIT IS IMPORTANT! Please paste our Project URL into the Project URL box:

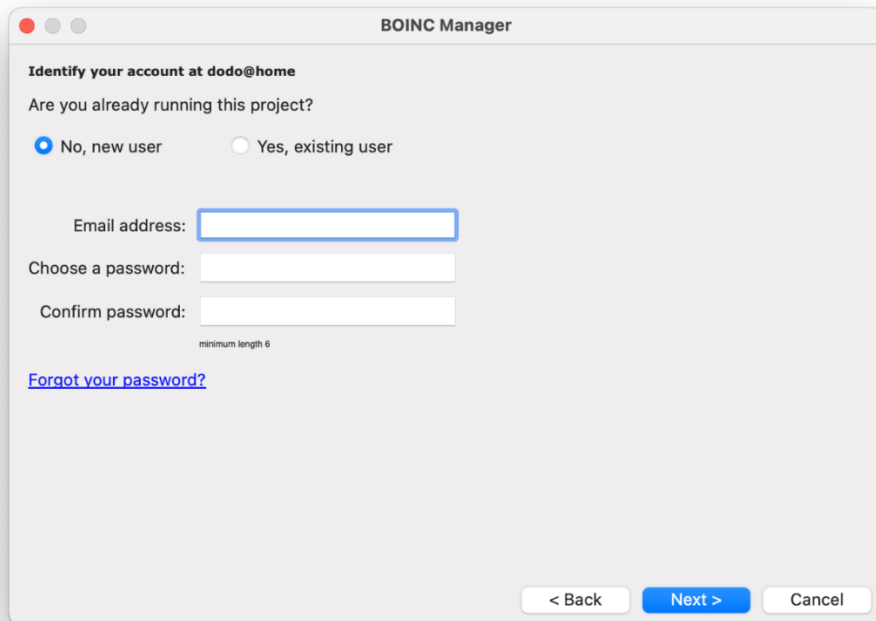
<https://team.dodoathome.com/dodo/>



Step 5: Hit "Next >" You should see a screen that says "Communicating with project. Please Wait..."



Step 6: Create an Account and Connect to DODO@Home

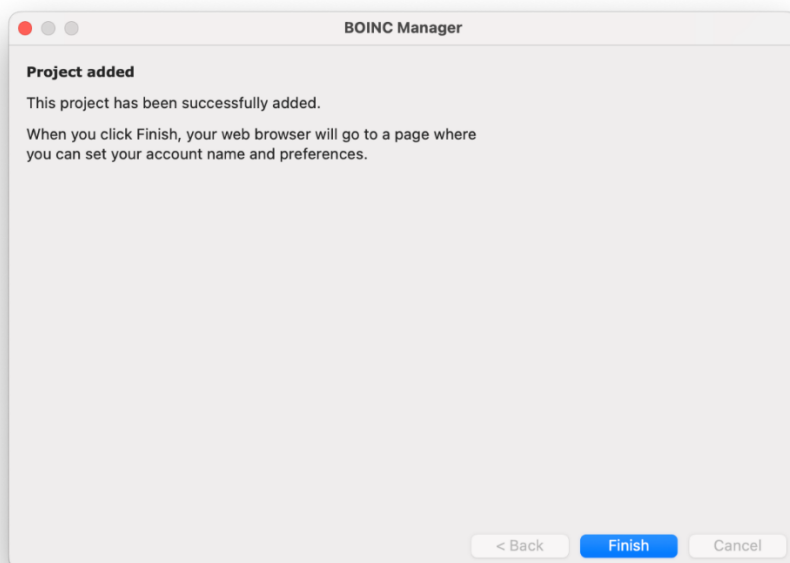


The image shows a macOS-style window titled "BOINC Manager". The main heading is "Identify your account at dodo@home". Below this, it asks "Are you already running this project?". There are two radio buttons: "No, new user" (which is selected) and "Yes, existing user". Below the radio buttons are three text input fields: "Email address:", "Choose a password:", and "Confirm password:". A small note "minimum length 6" is positioned below the "Confirm password:" field. A blue link "Forgot your password?" is located below the password fields. At the bottom right, there are three buttons: "< Back", "Next >" (highlighted in blue), and "Cancel".

- ✓ Leave 'No, new user' selected (unless you're setting up an additional computer and already have an account).
- ✓ Enter a valid email address.
- ✓ Choose a secure password and enter it twice. Be sure to save it somewhere.
- ✓ Click Next >

You should see the "Communicating with project. Please Wait..." screen again.

Assuming everything worked OK, you should see a "Project added" screen:



The image shows a macOS-style window titled "BOINC Manager". The main heading is "Project added". Below this, it says "This project has been successfully added." and "When you click Finish, your web browser will go to a page where you can set your account name and preferences." At the bottom right, there are three buttons: "< Back", "Finish" (highlighted in blue), and "Cancel".

Click Finish.

Step 7: Finish account setup

At this point your default web browser should open and connect you to the DODO@Home project website (<https://team.dodoathome.com/dodo>).

- ✓ Enter your Name (or a nickname if you'd prefer).
- ✓ Select your Country (this is optional but helps us understand where you are in the world).

dodo@home Project ▾ Computing ▾ Community ▾ Site ▾ Join Login

Finish account setup

Name
Identifies you on our web site. Use your real name or a nickname.

Country
Select the country you want to represent, if any.



©2024 Bryce Kuhlman, Inc.

The next page will allow you to Find a team.

Since this is a new project, we haven't defined any teams yet. As soon as we get a critical mass of users, we'll start creating teams. We'll notify you when that happens so you can join a team if you choose.

Finally, you'll be taken to your Dashboard (titled Welcome to DODO@Home).

dodo@home Project ▾ Computing ▾ Community ▾ Site ▾ ██████████ Log out

Welcome to dodo@home

View and edit your account preferences using the links below.

Account information

Name	██████████
Email address	████████████████████
Country	████████████████████
dodo@home member since	██████████
Change	email address · password · other account info
User ID	██████████
Used in community functions	
Account keys	View

Community

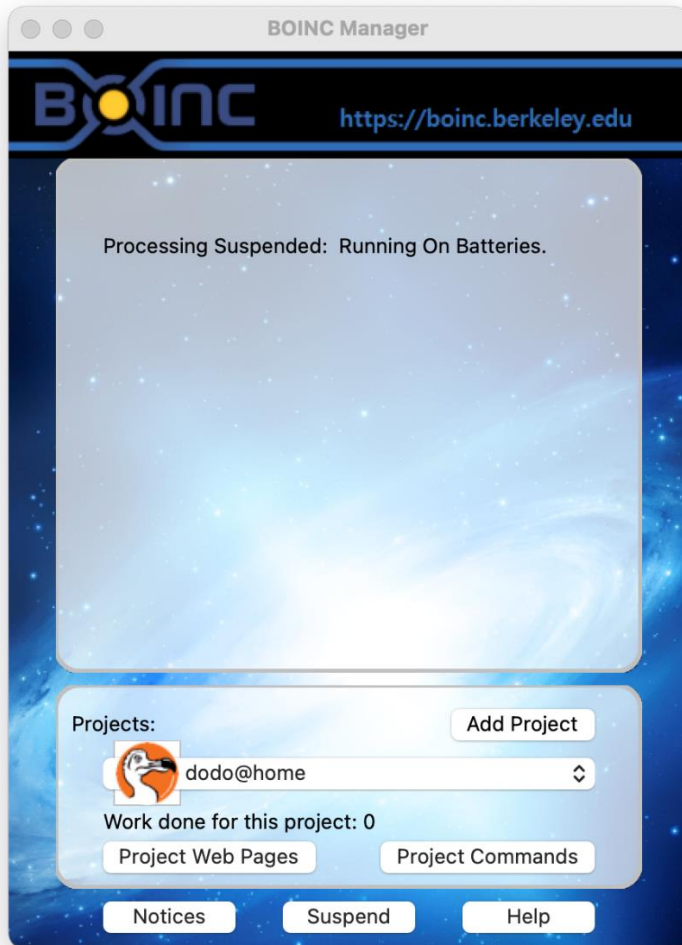
Private messages	Inbox · Write For email notification, edit community prefs
Team	None · find a team
Friends	Find friends

Preferences

When and how BOINC uses your computer	Computing preferences
Message boards and private messages	Community preferences

BOINC Manager

The BOINC Manager is your main interface and looks like this:



- ✓ The main window will change depending on the status of your computer and the project. As you'll see above, this screenshot was taken when the computer was running on batteries, so is not available for processing.
- ✓ You may also see "No work available to process" now and then.
- ✓ When jobs are running, the main area should be filled with a slideshow of Dodo imagery.

That's it!

Again, thanks for joining the ever-growing DODO ARMY of volunteer devices.

One final step; if you've not yet done so, please JOIN OUR MAILING LIST so we can keep you updated with progress.

Sign-up here: <https://dodoathome.com/#signup>

You might also like to DONATE to our project or get EXCLUSIVE DODO ARMY SWAG via our online store. Every penny goes towards our goal of sequencing the Dodo, and other extinct creature, genomes.

Donate here: <https://dodoathome.com/#donate>

Get your DODO swag here: <https://shop.dodoathome.com/>

Here's to marching forward towards progress of bringing the past, to the present for the future in an ethical, sustainable and environmentally friendly way. Thanks for being part of the journey.

The DODO@HOME team.



PS. We hope you won't want to, but should you ever wish to uninstall the software, please visit this link for instructions. We'd be sad to see you go!

<https://github.com/BOINC/boinc/wiki/ReleaseNotes#uninstalling-boinc>



Featured products



Dodo Army Unisex Heavy Blend™ Crewneck Sweatshirt
From £27.98 GBP



Dodo Army Unisex Heavy Blend™ Hooded Sweatshirt
From £33.90 GBP



Dodo Army Unisex Heavy Blend™ Hooded Sweatshirt
From £33.90 GBP



Dodo Army Unisex Jersey Short Sleeve Tee
From £16.93 GBP



Hatching the Future Dodo Hat with Leather



Return of the Dodo Ceramic Mug (11oz, 15oz)



Check out our EXCLUSIVE Dodo swag now, designed by professional artists!



Copyright. The De-Extinction Company, London, 2024.